

## Analog Gateway



Frontview

### Analog to IP Encoder

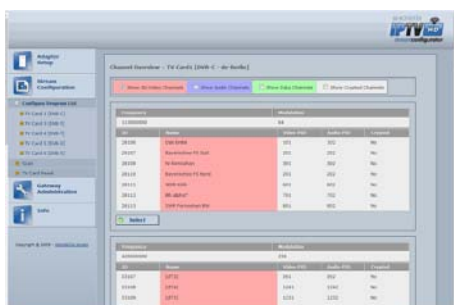
19" 4U MPEG2 Analog to IP encoder. This encoder sends converted S-Video or Composite Video and Stereo-Audio signals into the local IP network as multicast MPEG2 transport stream. These multicast streams can be received and displayed from every IPTV-STB or software player inside the multicast network.

Additionally, streaming of analog TV signals (additional antenna required) is possible.

Due to the digital transmission using the TCP/IP networks no quality loss appears. The encoder is designed for a robust 24 hour operation for professional IPTV environments.

Required Ethernet Port on the switch: 1x1000MBit/s. External video devices with S-Video and stereo (3,5mm TRS) output can be connected to this encoder to transmit video signal from external devices into the IPTV network.

The easy to use web interface helps users to configure the gateway without deep technical knowledge with few steps.



WebGUI

### Server specification:

- 19" 4U, black
- Gigabit LAN
- 400W Green ATX power supply unit
- 6x analog encoder
- incl. power supply cable (CEE 7/4, DIN)

### Technical Details:

- Operating temperature: -10°C to 50°C (14°F to 122°F)
- Humidity: <70% non-condensing
- Weight: approx. 15kg
- Power Input: 100-240V, 50/60Hz
- Power consumption: approx. 200W max.
- Dimensions: 18x43x69 cm (H x W x D)
- ROHS compliant
- CE marked in accordance with EU Low Voltage and EMC Directives



Rearview

Errors and omissions excepted. Several hardware components and images can differ at the time of the order.

Release 05/2010

mail: [info@macnetix.com](mailto:info@macnetix.com) | web: [www.macnetix.com](http://www.macnetix.com)